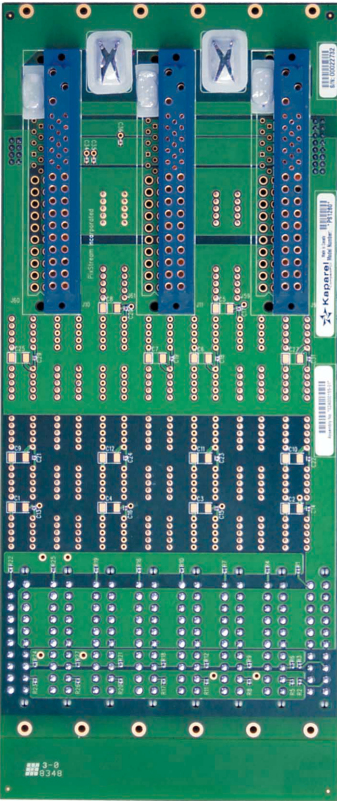


Kaparel/Rittal understands the importance of a reliable power source, along with the importance of maintaining that power throughout the entire system. That's why we've developed a complete line of power products to cover every aspect of powering CompactPCI systems.



**Power Supply Backplanes:**

Kaparel/Rittal power supply backplanes provide a flexible interface for the power supply requirement. As a result, there is no need to modify expensive backplanes to incorporate redundant power supplies or N+1 configuration.

Kaparel/Rittal offers power backplanes that accommodate 1, 2, 3, 4, 7, and even 10 power supplies. Multiple power supply backplanes may be bridged together for additional power supply requirements.

**Cable Assemblies:**

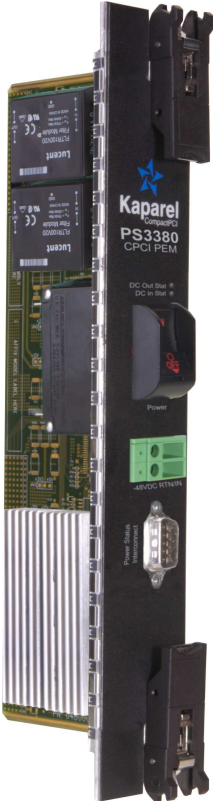
Kaparel/Rittal offers a number of rugged, standard cable assemblies to support our standard power products, as well as custom assemblies for unique power applications.



**Power Supplies:**

The reliability of any CompactPCI system is heavily dependent on the quality of its power source. Kaparel/Rittal certifies every power supply we sell for performance, reliability, and quality. All Kaparel/Rittal power supplies are tested and derated in real subracks in the most rigorous conditions.

Kaparel/Rittal offers power supplies in 3U (PS3300 Series) and 6U (PS3350 Series and PS3400) formats with AC or DC inputs. All Kaparel/Rittal power supplies are hot swappable and have current sharing outputs.



**Power Entry Modules (PEMs):**

The PS3380 is a 6U, 8HP RTM (rear transition module) that provides -48 V power to a CompactPCI backplane for telecom applications. The card connects to the backplane through a rear side blind mating connector. The PS3380 accepts -48 V DC externally and provides filtered -48 V to the backplane. The board is hot swappable for high availability systems and parallel operation for redundant N + 1 applications.



Order No.	Model No.	Description
9810337	1600-12	ATX cable harness 12"
3686570	1600-16	ATX cable harness 16"
9810338	1600-20	ATX cable harness 20"