

**PS1260 6U x 24HP:**

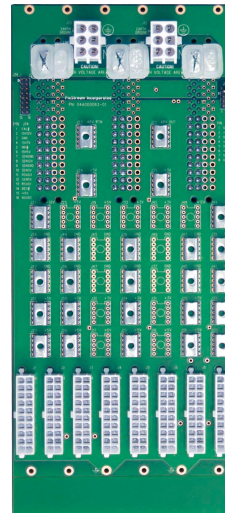
The PS1260 & PS1265 are 6.5U (or 6U) tall, 24HP wide power backplanes. They may be used with the PS1300, PS1400, or PS4400 series of modular CompactPCI backplanes, or in any other application where large supply currents are required. Both will accept up to three Positronic type 500W power supplies operating in current sharing mode. The PS1260 and PS1265 support different power supply styles.

The PS1260 supports the standard Positronic style used by most cPCI power supply vendors, including Kaparell/Rittal's PS335x and PS535x series of power supplies. The PS1265 supports the special "High Profile Cooling Fin" style available from some vendors. Either AC or DC power is supplied to the power plane by means of two six-contact Mate-n-Lok connectors. There are 8 ATX-style power connectors on each of the PS1260 and PS1265, for distribution of

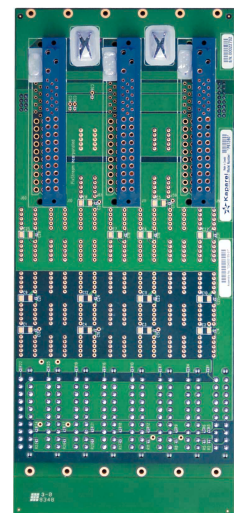
regulated power to Kaparell/Rittal's modular CompactPCI backplane families. The connectors used are Molex "Mini-Fit Jr." series headers or compatible connectors. These are the same connectors that are recommended for ATX style PC power supplies. The CompactPCI backplanes will be connected to the power backplanes by means of cable assemblies (such as Kaparell/Rittal's PS1600) with mating "Mini-Fit Jr." receptacles at either end. Both backplanes also have several rows of power taps for use when large supply currents are required, or when ATX connectors cannot be used. There are 26 power taps per board, connected to various output voltages.

**PS1260 6U x 24HP:**

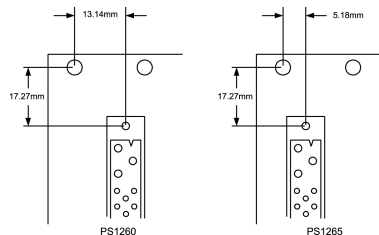
The PS1265 is the same board as the PS1260, only with its power supply connectors offset to the left to accommodate PICMG 2.11 power supplies (see below).



PS1260 Rear view



PS1260 Front view



Order No.	Model No.	Related products
3686549	PS1400	6U monolithic series backplanes (see pg 73)
3686877	PS4400	6U modular series backplanes (see pg 74)
9810390	PS3300	6U hot swappable power supplies (see pg 141)
3686570	PS1600	20 conductor ATX cable assembly, 16" (see pg 87)

Order No.	Model No.	Dimensions	Power supply capacity	Input connector	Output connector	Power input	Voltage settings	Hot swap
3688601	PS1260	6U x 24HP	3 x 1 (3U)	P38	ATX	1500W (3 x 500W)	Local/remote	•
3687992	PS1255	6U x 24HP	1 (6U) single	P38	ATX	1500W (3 x 500W)	Local/remote	•