

# Pixus Technologies

## PRODUCTS & SERVICES



CHASSIS PLATFORMS

BACKPLANES

COMPONENTS

SUBSYSTEM INTEGRATION

**pixus**  
TECHNOLOGIES

[www.pixustechnologies.com](http://www.pixustechnologies.com)

## ABOUT PIXUS TECHNOLOGIES

Pixus was founded in 2010 by former Kaparel/Rittal management, with the design leadership team that developed cutting-edge COTS open standard embedded computing solutions since the 1990's. Although we are privately owned, the extremely close relationship with Rittal gives Pixus the flexibility and nimble approach of an independent enterprise with the resources of a \$ multi-billion company.



## BENEFITS OF CHOOSING PIXUS TECHNOLOGIES

- Manufacturing/integration in Canada, USA, Asia, and Europe
- Superior, dedicated service
- Excellent quality & reliability
- Nimble approach means best & most cost-effective solution
- Engineering expertise in electrical, mechanical, and integration
- Privately owned
- Established 2010 at HQ in Waterloo, Ontario (Canada's Technology Corridor)
- ISO9001:2015 and ITAR registered



ISO9001



ITAR/CGP



VITA



PICMG

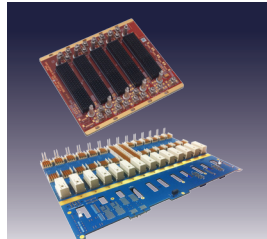


## PIXUS PRODUCT TYPES

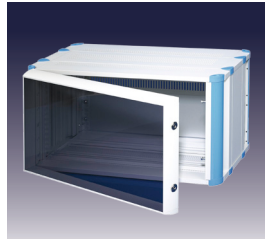
Pixus leverages over 100,000 components to build modular commercial and rugged enclosure systems tailored to your application.



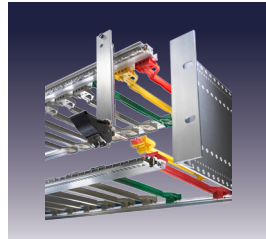
Chassis Platforms



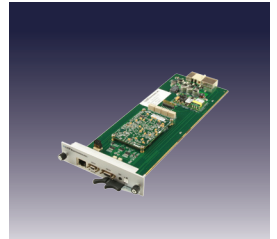
Backplanes



Instrumentation Cases



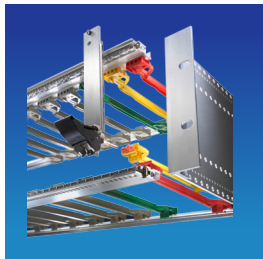
Components



Specialty Products

## CHASSIS PLATFORMS

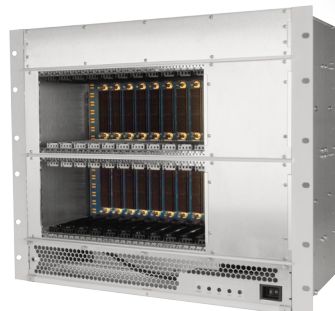
“MODULAR DESIGN FOR VIRTUALLY UNLIMITED CONFIGURATIONS”



Pixus leverages modular extrusion-based technology to provide a solution tailored to your requirements. We offer backplane/chassis solutions in these COTS open standard architectures:

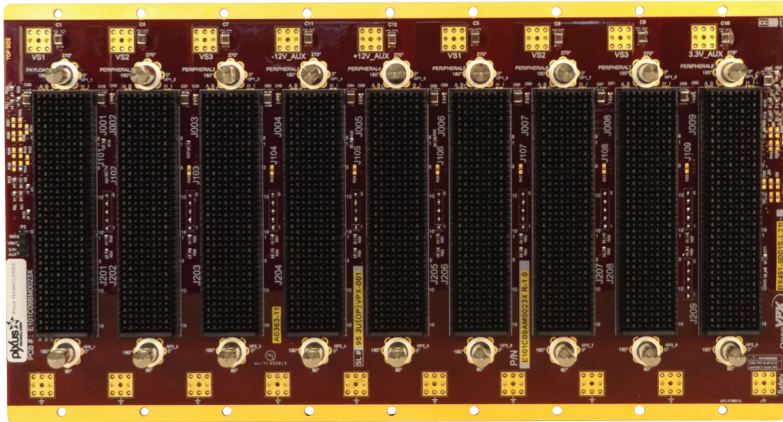
- OpenVPX
- AdvancedTCA/MicroTCA
- CompactPCI Serial
- Other – PXIe, CompactPCI, VME64x, Custom

Pixus offers some of the most powerful cooling solutions in the industry. The patented RiCool™ technology provides an efficient design of hot-swappable fans that reside directly above the card cage and blow the heat 90 degrees out the back of the system. This allows the use of RTMs (Rear Transition Modules) while providing advanced cooling in minimal chassis rack height.



## BACKPLANES

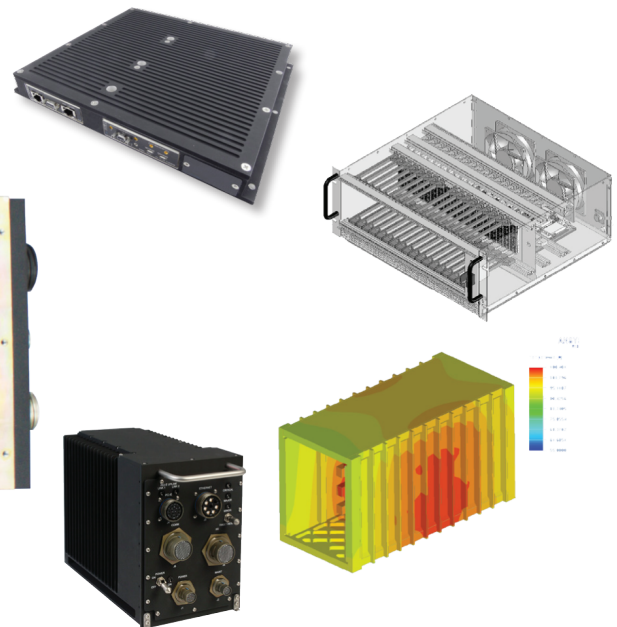
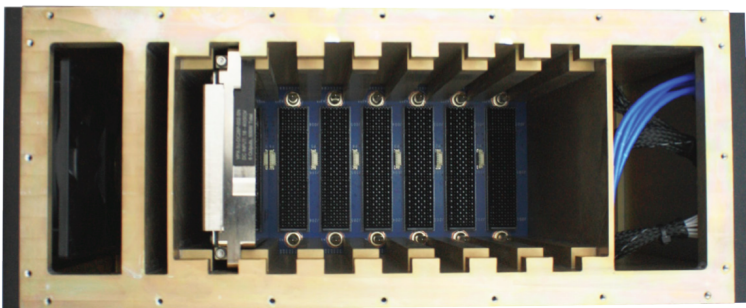
“HIGH-PERFORMANCE DESIGN SPECIALISTS”



Pixus specializes in high-performance backplane design, including to PCIe Gen 4 & 100GbE speeds! VITA 66 (optical) and VITA 67 (RF) versions are standard options.

## RUGGED DESIGN

“VERSATILE, RUGGED & PROVEN”



With various modular, rugged rackmount and ATR designs, Pixus has a solution for you. Our products provide a wide range of conduction-cooled and advanced heat-exchange designs for the high power requirements of OpenVPX and other heat-intensive systems.

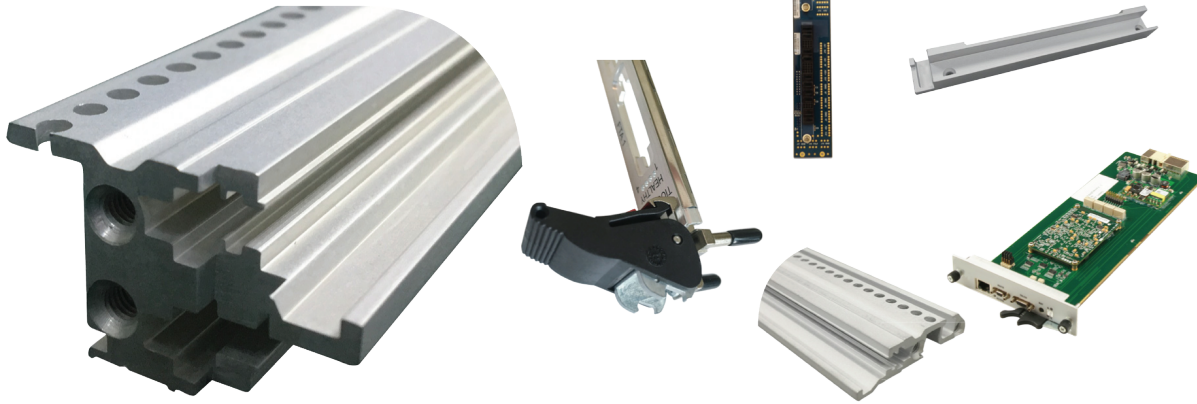


## COMPONENTS

**“HIGHEST RELIABILITY, STRONG AND PRECISE”**

**No breaking handles!**

**Rugged rails that don't bend or crack!**



Our vast array of embedded system chassis platform components in the Eurocard format includes a complete line of components designed specifically for OpenVPX. This includes specialty card guides, panels/filler panels, threaded inserts, rugged rails, and more! The Pixus rugged rail is designed for the high insertion forces of OpenVPX. Our injector/ejector handles feature a rugged metal engagement claw that prevents wear or cracking.

## INSTRUMENTATION CASES

**“MODULAR VERSATILITY & STYLE”**



Vast array of Rittal brand modular electronics enclosures in premier RiCase and versatile Vario styles. Modular approach allows wide range of standard heights (1U-12U), widths (19", 9.5", other), and depths (150mm to 540mm). Rugged Vario Mobile/Railway versions are available.



50 Bathurst Dr.  
Waterloo, Ontario N2V 2C5



Phone: 519 885 5775  
Fax: 226 444 0225



[sales@pixustechnologies.com](mailto:sales@pixustechnologies.com)  
[info@pixustechnologies.com](mailto:info@pixustechnologies.com)  
[www.pixustechnologies.com](http://www.pixustechnologies.com)



East Coast  
Marietta, GA  
Phone: 470 209 4467



West Coast  
Sacramento, CA  
Phone: 916 297 0020

